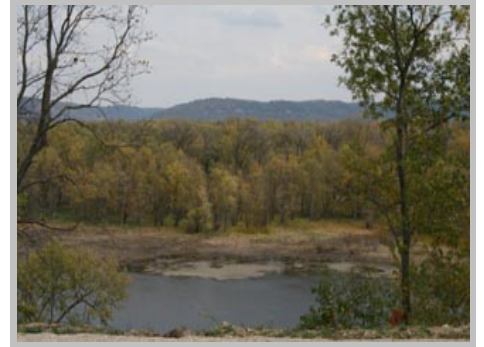
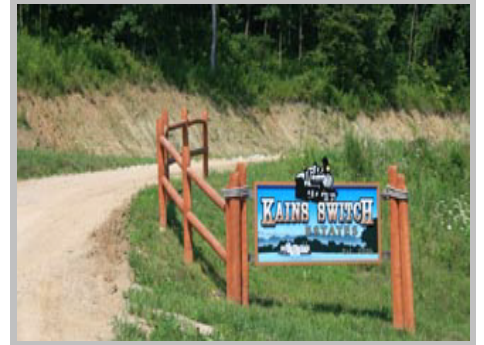


# SWEENEY REAL ESTATE

Welcomes you to

1832 Kain's Switch Lane  
Lansing, IA 52151



Attention to detail is evident in this newly-built home. Features cathedral ceilings, log accents and stone front. Located in small development off Highway 26 North between New Albin and Lansing. \$165,000.

- \* Built 2008
- \* Approximately 1,200 Sq Ft
- \* Vinyl siding with stone front
- \* Bedrooms: 2
- \* Bathroom: Full
- \* Lot size: 1.97 Acres (XL Lot with room to expand)
- \* Garage: Attached - 2 Stall (w/ storage above)
- \* Insulation: Walls - sprayed urethane  
Ceiling - double thick
- \* In-floor heat & High Eff Heater (low heating costs)
- \* Central Air
- \* Plumbing & electrical sleeve for future addition
- \* Easy access off of highway
- \* Bike trail nearby

Jack Sweeney, Broker  
Bonnie Sweeney, Broker Associate  
Stacie Cooper, Broker Associate

(563) 568-4170

[www.sweeneyrealestate.com](http://www.sweeneyrealestate.com)